



Protected Production of Fruits and Vegetables for Nutrition Security in Urban and Peri- Urban Environments

MORVEN A. MCLEAN, PH.D.

EXECUTIVE DIRECTOR, ILSI
RESEARCH FOUNDATION

Bringing Scientists Together

The ILSI Research Foundation is a non-profit, public charitable scientific organization with a mission to bring scientists together to improve environmental sustainability and human health.

Working for Public Benefit

The ILSI Research Foundation collaborates with scientific experts around the world. Our research, capacity building and outreach efforts currently include:



Environmental Risk
Assessment



Food Safety
Assessment



Sustainable
Nutrition Security

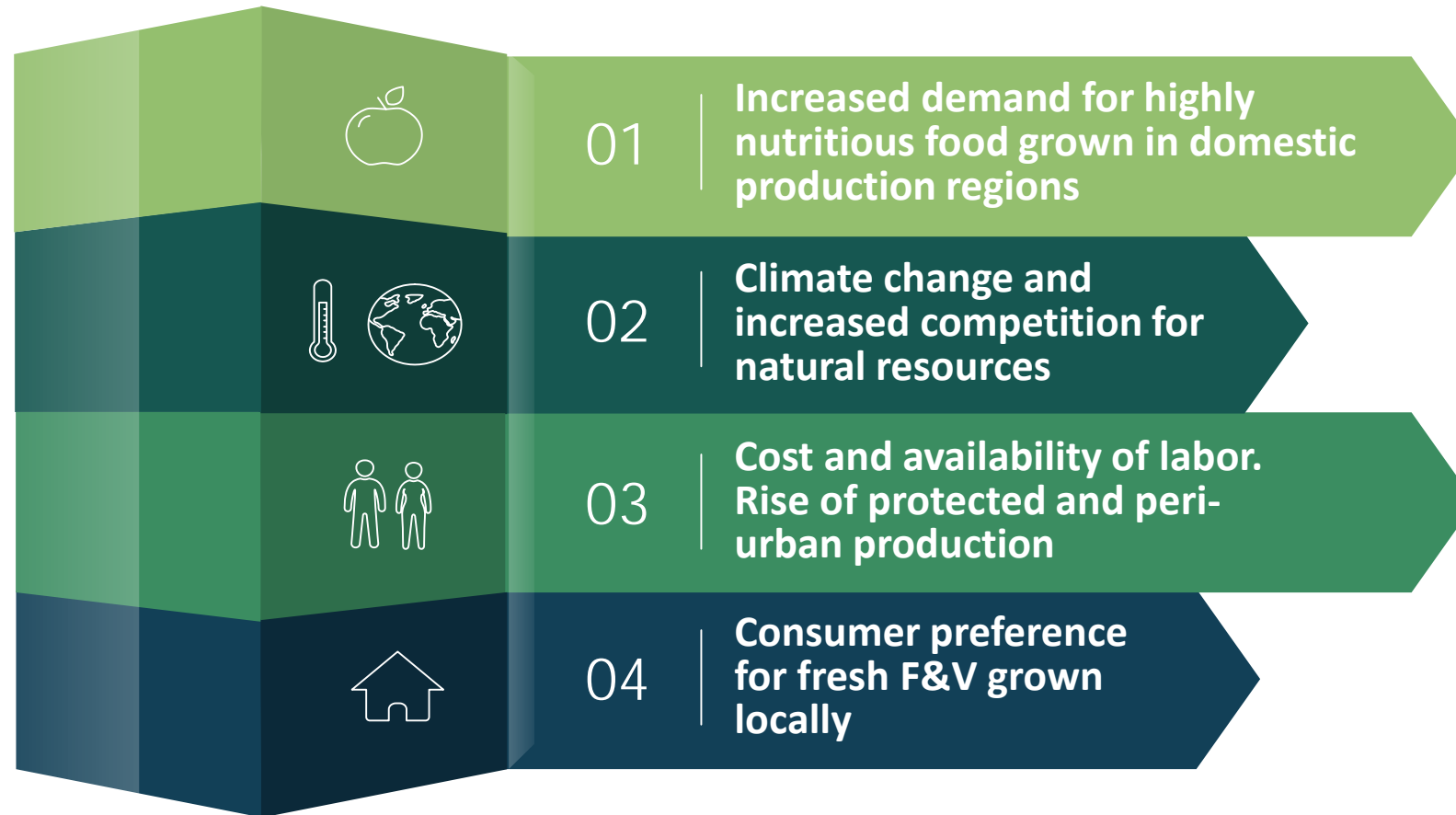


Agricultural
Biotechnology



Biosafety Capacity
Building

Drivers of Change in Fruit and Vegetable Supply Chains



Fruit and Vegetable Supply Chains: Climate Adaptation and Mitigation Opportunities



United States Department of Agriculture
National Institute of Food and Agriculture
Award# 2017-68002-26789

Target Crops

Year 1	Potatoes, Tomatoes, Oranges
Year 2	Green Beans, Strawberries, Sweet Corn
Year 3	Carrots, Spinach, Grapes*
Year 4	Broccoli*, Melons*, Onions*

**Inclusion contingent on additional funding*



<http://ilsirf.org/what-we-do/fruit-vegetable-supply-chains/>

Objective

Americans are encouraged to eat more fruits and vegetables as part of a healthy, balanced diet. However, meeting increased demand for these highly nutritious foods will be challenging for domestic production regions in the United States. These supply chains are undergoing significant innovation and transformation as a result of multiple drivers including: consumer preference for fresh produce grown locally; climate change and increased competition for natural resources; cost and availability of labor; efforts to improve sustainability profiles; and the rise of protected and peri-urban production.

Using an integrated, collaborative approach, a multi-disciplinary, multi-institutional team co-led by the ILSI Research Foundation and the University of Florida will help the US maintain a nutritious, reliable, affordable, and environmentally-sound food supply.

Share Save

Collaborators & Partners

USDA National Institute of Food and Agriculture, University of Florida, International Food Policy Research Institute, University of Arkansas, University of Illinois, World Agricultural Economic and Environmental Services, Washington State University





ILSI Research
Foundation



WORLD BANK GROUP

Scientific Symposium: Protected Production of Fruits and Vegetables for Nutrition Security in Urban and Peri- Urban Environments

Washington, DC, USA

July 18, 2018

1:00 pm – 5:00 pm

World Bank Main Building, Room MC 2-800, 1818 H Street NW

www.ilsirf.org

Acknowledgements

Dr. Juergen Voegele

Dr. Erick Fernandes, Dr. Geeta Sethi and Mr. Ramon Yndriago

Dr. Eija Pehu

Ms. Stephanie Carter and Ms. Layla Tarar

Our speakers

Our Moderators

ERICK FERNANDES, PH.D.

Global Lead - Technology, Innovation and Climate Smart Agriculture at the World Bank.

Focus on designing and managing climate resilient landscapes across the World Bank's Agriculture investment portfolio.

Over 35 years of agriculture and natural resource management experience in Sub-Saharan Africa, East Asia, Latin America, the Middle East and North Africa, and South Asia.

GEETA SETHI, PH.D.

Adviser and Global Lead – Food Loss and Waste for Agriculture Global Practice at the World Bank

More than 16 years of experience working as an economist on fragile, low-, and middle-income countries.

Focus on issues of rural development, service delivery and intergovernmental fiscal policies in India, Pakistan, Nepal, Sri Lanka, Mexico, Argentina, Peru, Colombia, and Honduras.